

Steel Transport Chair

HCPCS: E1038

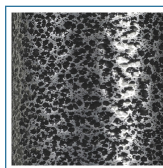


FIGURE A



FIGURE B

- Weighs 26 lbs
- Attractive silver vein finish (Figure A)
- Available in 17" or 19" seat widths
- Back folds down for storage and transport (Figure B)
- Swing-away footrests come standard
- Padded armrests provide additional comfort
- 8" casters in front and rear
- Comes with attractive nylon upholstery that is durable and easy-to-clean
- Standard rear wheel locks
- Comes with upholstery handles to fold chair
- Convenient cup holder can easily attach to chair Sold separately (Model# STDS1040S)

PRODUCTS	Description
TR37E-SV	Trans Chair Econ 17in Slv Vein 1/cs
TR39E-SV	TransChair,Econ 19in SlvVein,1/cs

SPECIFICATIONS	Description
Back Height	18"
Carton Shipping Weight	31 lbs
Overall Height	39"
Overall Length w/ Riggings	33"
Overall Width	21.5" (open) 8" (closed) 23.5" (open) 10.75" (closed)
Seat Dimensions	17" (W) x 16" (D) 19" (W) x 16" (D)
Seat To Floor Height	19"
Warranty	Limited Lifetime
Weight	26 lbs
Weight Capacity	250 lbs

ACCESSORIES	Description
STDS1040S	Cup Holder, Swivel,1BX,6/CS, BX

PARTS	Description
STDS2349BLK	Back Uphol 17"x18",Black,1/bx, BX
STDS2351BLK	Back Uphol 19"x18",Black,TR39,1/ea, BX
TRHG	Hand Grips/Universal,1pr/bx, BX
STDS4S3601	PushHandle,SilverVein,TR37-E/TR39-E,1/ea, EA
STDS4S1503	Folding Hinge, TR39, 1/ea, EA

PARTS	Description
STDS1070	Seat Rail Guide, Removable Arm, 1/ea, EA
STDS4011	BrakeTip, 1/ea, EA
STDS4S092L	Brake, Left, TR37E-SV/TR39E-SV, 1/ea, EA
STDS4020	Tipping Sleeve 1/ea, EA
STDS4S3602	Rear Axle Bearing,TR4S,1pair, PR
STDS4S092R	Brake, Right, TR37E-SV/TR39E-SV, 1/ea, EA
STDS4S3603	Rear Hub Cap,TR4S,1pair, PR
STDS4S3604	Rear Axle,TR4S,1ea, EA
STDS4S3605	Rear Wheel,TR4S,1ea, EA
STDS4S36X7-DDA	Crossframe for TR37E-SV-DDA, 1/ea, EA
STDS4S36X9-DDA	Crossframe for TR39E-SV-DDA, 1/ea, EA
STDS1011	Wheel Bearing, 8mm x 22mm 1/ea, EA
STDS8M4601	ForkStemBearing,SSP2,Cruiser,1/ea, EA
STDS3J4533	Caster Fork,SSPRB, 1/ea, EA
STDS1069-4	Hanger Pins, 4 per PKG, PKG