

## Bariatric Foot Stool

HCPCS:

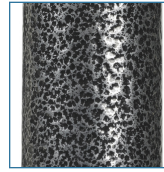


FIGURE A



FIGURE B

- Manufactured with 1" steel tubing
- Silver vein finish easy-to-maintain and less institutional looking (Figure A)
- Non-skid ribbed rubber platform
- 13062-1SV comes with handrail (Figure B)
- Weight Capacity 500 lbs

### PRODUCTS

### Description

13037-1SV	BariatricFootStool,SilverVein, 1/cv
13062-1SV	BariatricFootStool,wHandRail,1/cs

### SPECIFICATIONS

### Description

Carton Shipping Weight	8   16 lbs.
Handle Height	34"
Overall Dimensions	17" (W) x 13.25" (D)
Step Height	9"
Step Surface	14" (W) x 10" (D)
Warranty	Limited Lifetime
Weight	6   10 lbs.
Weight Capacity	500 lbs